

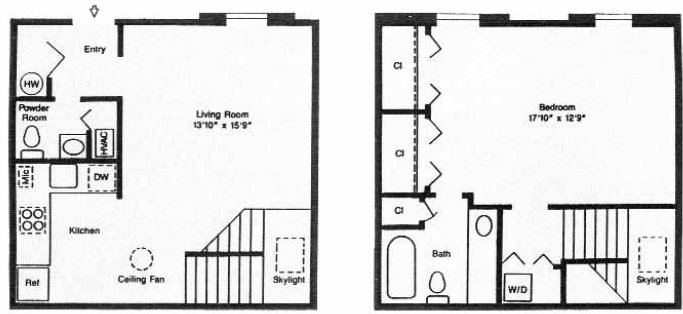


1500 Highpointe Drive • Harrisburg, PA 17110
Tel: (717) 238-7762 • Fax: (717) 238-6814

High Pointe Club Apartments
offer a beautiful country setting
in picturesque Susquehanna Township,
five minutes from major interstates
& less than ten minutes
from downtown Harrisburg.

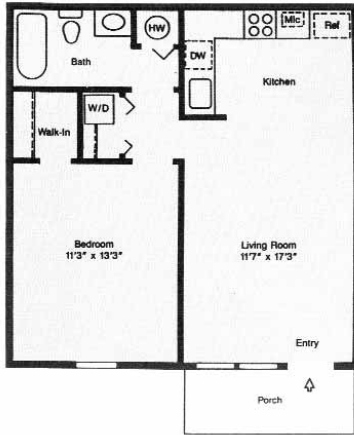


1500 Highpointe Drive • Harrisburg, PA 17110
 Tel: (717) 238-7762 • Fax: (717) 238-6814



Super One Bedroom, One and One-half Bath
 900 sq. ft.
 Townhouse

\$ _____



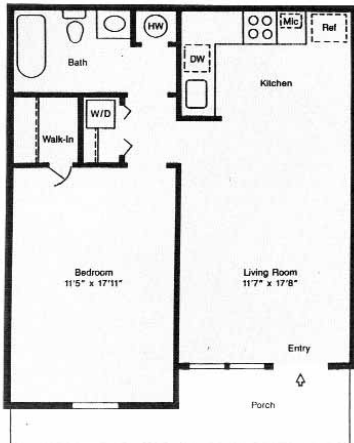
One Bedroom
 One Bath
 700 sq. ft.
 Garden

\$ _____



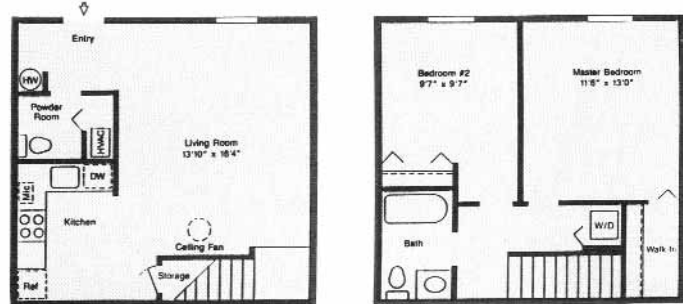
Two Bedroom, Two Bath
 850 sq. ft.
 Garden

\$ _____



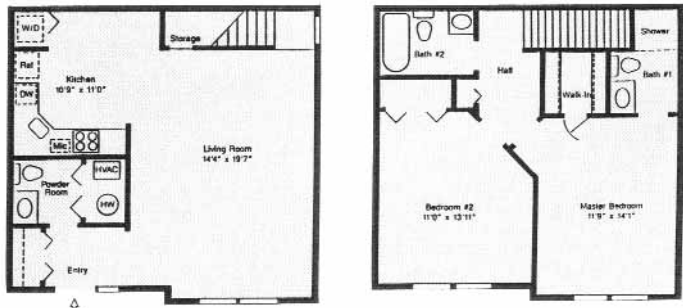
Deluxe
 One Bedroom
 One Bath
 760 sq. ft.
 Garden

\$ _____



Two Bedroom, One and One-half Bath
 900 sq. ft.
 Townhouse

\$ _____



Deluxe 2 Bedroom, Two and One-half Bath
 1100 sq. ft.
 Townhouse

\$ _____



1500 Highpointe Drive • Harrisburg, PA 17110
Tel: (717) 238-7762 • Fax: (717) 238-6814

Features/Amenities

- Six floor plans from which to choose
- Private entrance to each apartment
- Steel entry doors with double locking system
- Plush wall-to-wall carpeting
- Thermal/storm windows and screens
- Central air conditioning and heat pump
- Washer and dryer in every apartment
- Garbage disposal
- Dishwasher
- Easy to clean electric range
- Frost-free Frigidaire refrigerator/freezer
- Microwave
- Decorator bathrooms with vanity, mirrored medicine cabinets and easy to clean one-piece shower/tub combination
- Some floor plans include ceiling fans, skylights, open staircases and bay windows
- Garages are available if you desire
- On-site fully equipped fitness room
- A luxurious clubhouse complete with community pool, sauna, locker space, restrooms equipped with showers
- Outdoor tennis court, car washing area, picnic area with grills, swimming pool with sundeck... yours to use at no extra charge

Fees/Deposits

Lease Term: 1 year

\$_____ Security deposit

\$_____ Application fee (*Nonrefundable*)

\$_____ Holding fee

The holding fee holds the apartment until the application is approved. The fee will then be applied to the security deposit. If the application is rejected, the fee will be refunded.

Rent: Due on or before the first of the month. Rent will be prorated if a move-in occurs after the first of the month.

Pet Policy: Conditional. See management for details

\$_____ Pet deposit

\$_____ Nonrefundable pet fee (*per pet*)

Utilities: Included in the rent are water, sewer, and trash removal.

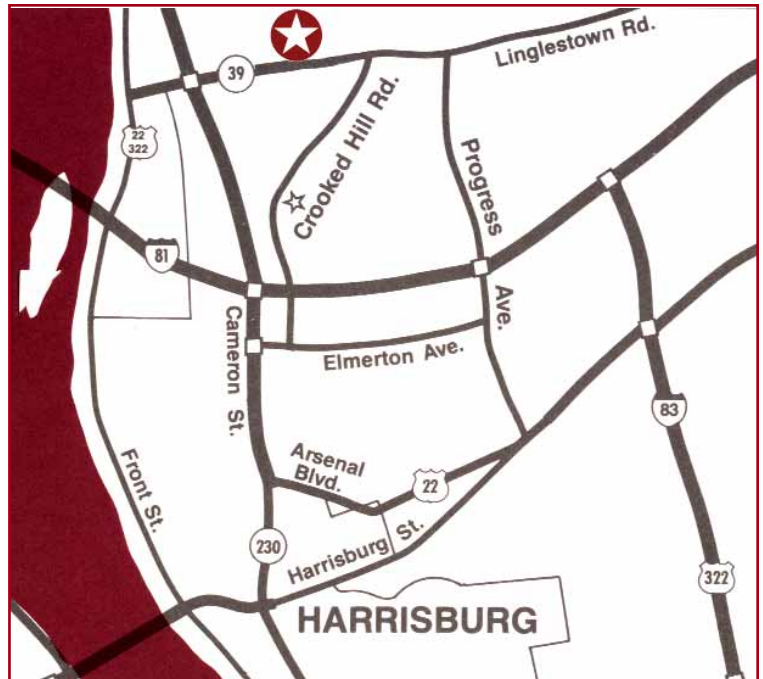


1500 Highpointe Drive • Harrisburg, PA 17110
Tel: (717) 238-7762 • Fax: (717) 238-6814

Directions

From Interstate 81, take the Progress Avenue Exit. Follow Progress Avenue north to Linglestown Road (Route 39). Make a left then follow to first light at Crooked Hill Road. Turn left onto Crooked Hill Road and continue for about 2 miles. High Pointe Club Apartments will be on the left at Shutt Mill Road.

From Harrisburg or Interstate 81, take Cameron Street (Exit 23). Turn left at first light onto Elmerton Avenue. Follow to next red light at Crooked Hill Road. Turn left and continue for about 1.5 miles. High Pointe Club Apartments will be on the right at Shutt Mill Road.



Professionally Managed by RP Management, Inc.

Established in 1992, RP Management, Inc.'s mission is to provide professional and efficient management for residential apartment communities. Each RP Management community employs on-site staff, including leasing consultants and maintenance personnel, dedicated to providing high level service and maintaining resident satisfaction. As an owner-operator, RP Management concentrates on long-term ownership and continual growth while offering high quality apartment living for its residents. You will find that each community offers a distinctive way of life in apartment living and a place you will be proud to call home.

Terms and conditions subject to change without prior notice.
Other restrictions may apply.