



## *Glenbrook East*

Located just outside the heart  
of Stroudsburg is the  
premier property of the Poconos,

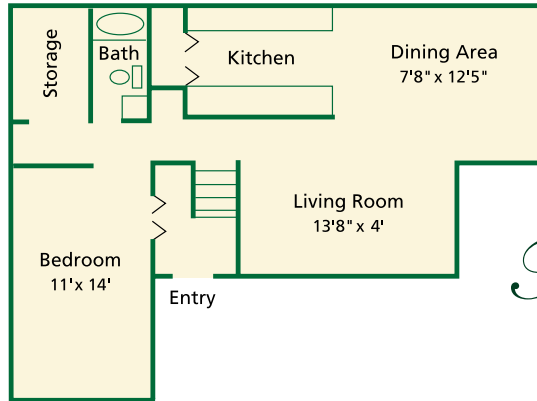
### *Glenbrook East.*

Nestled on approximately  
18 acres of beautifully landscaped grounds  
& lush vegetation, we offer you  
the opportunity to enjoy a serene setting  
while only being minutes from  
a stroll downtown, major highways,  
grocery stores, shopping mall and outlets.



# Glenbrook East

26G Waverly Drive • Stroudsburg, PA 18360  
(570) 420-9390 • Fax (570) 420-0446



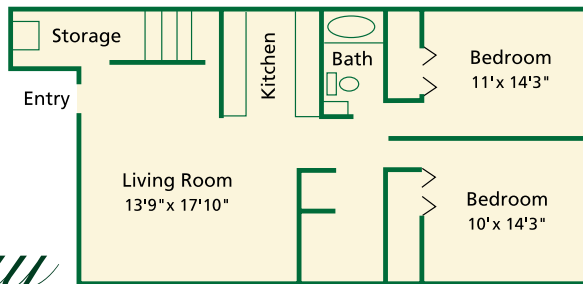
1 bedroom, 1 bath  
750 sq. ft.

\$ \_\_\_\_\_

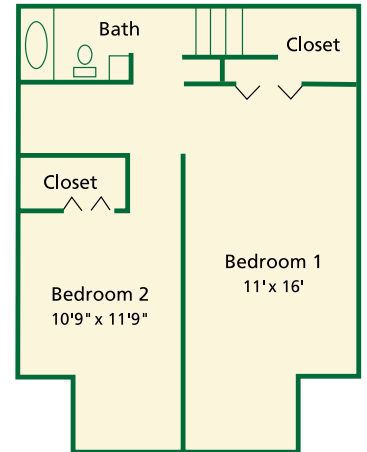
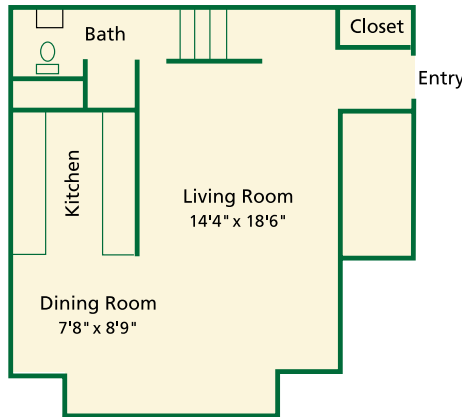
## The Inlet

2 bedroom, 1 bath  
900 sq. ft.

\$ \_\_\_\_\_



## The Bay



## The Brook

2 bedroom, Townhouse  
1020 sq. ft.

\$ \_\_\_\_\_



## Glenbrook East

26G Waverly Drive • Stroudsburg, PA 18360  
(570) 420-9390 • Fax (570) 420-0446

### features

- Renovated kitchens and baths
  - Central air conditioning
- Washer/dryer hook-ups in each apartment
  - Spacious floorplans
  - Mini-blinds on all windows
    - Pet friendly
    - Private entrances
- Professional on-site maintenance
  - Insulated windows
- 24-hour emergency maintenance

### fees & deposits

Lease Term: 1 year

\$\_\_\_\_\_ Security deposit

\$\_\_\_\_\_ Application fee  
(Nonrefundable)

\$\_\_\_\_\_ Holding fee

*The holding fee holds the apartment until the application is approved.*

*The fee will then be applied to the security deposit. If the application is rejected, the fee will be refunded.*

Rent: Due on or before the first of the month. Rent will be prorated if a move-in occurs after the first of the month.

Pet Policy: Conditional.

See management for details.

\$\_\_\_\_\_ Pet deposit

\$\_\_\_\_\_ Nonrefundable pet fee  
(per pet)

\$\_\_\_\_\_ Monthly pet rent  
(per pet)

Utilities: Included in the rent are water, sewer, and trash removal.



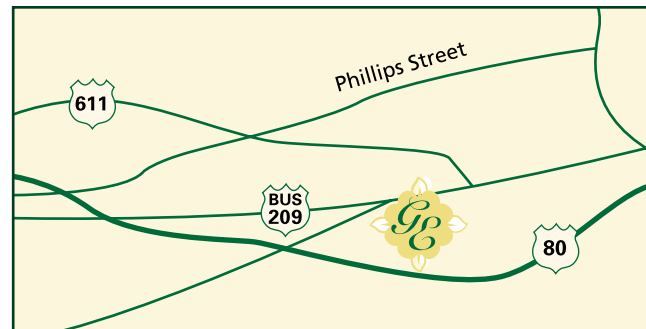
## Glenbrook East

26G Waverly Drive • Stroudsburg, PA 18360  
(570) 420-9390 • Fax (570) 420-0446

### *directions*

Traveling 80 East: Take Exit 305 (Main Street) Bear right at end of ramp. Go through one light. Turn right onto Waverly Drive, before Wawa. Follow signs to leasing office.

Traveling 80 West: Take Exit 306, Dreher Avenue. Turn right at stop sign. Go to traffic light and turn right onto Waverly Drive. Follow signs to leasing office.



### Professionally Managed by RP Management, Inc.

Established in 1992, RP Management, Inc.'s mission is to provide professional and efficient management for residential apartment communities. Each RP Management community employs on-site staff, including leasing consultants and maintenance personnel, dedicated to providing high level service and maintaining resident satisfaction. As an owner-operator, RP Management concentrates on long-term ownership and continual growth while offering high quality apartment living for its residents. You will find that each community offers a distinctive way of life in apartment living and a place you will be proud to call home.

Terms and conditions subject to change without prior notice.  
Other restrictions may apply.