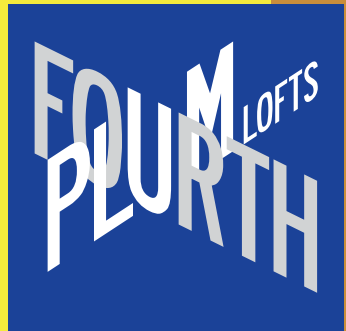




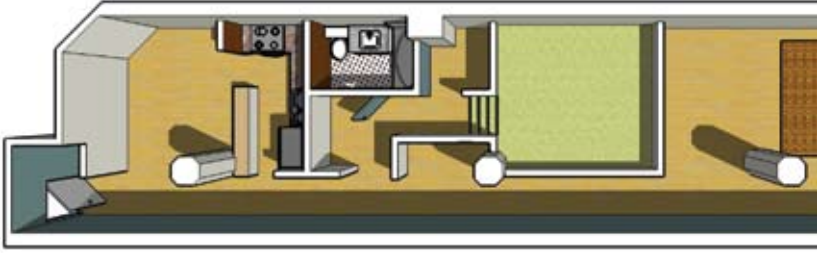
APARTMENTS

IN THE **H**HEART OF

DDOWNTOWN



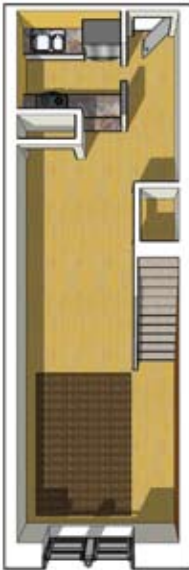
Typical Floor Plans



> One-bedroom with platform (1040 sq. ft.)



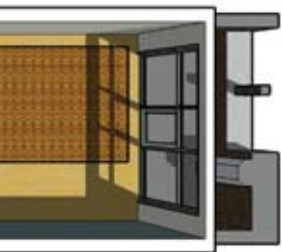
> One-bedroom platform (790 sq. ft.)



> One-bedroom loft (800 sq. ft.)



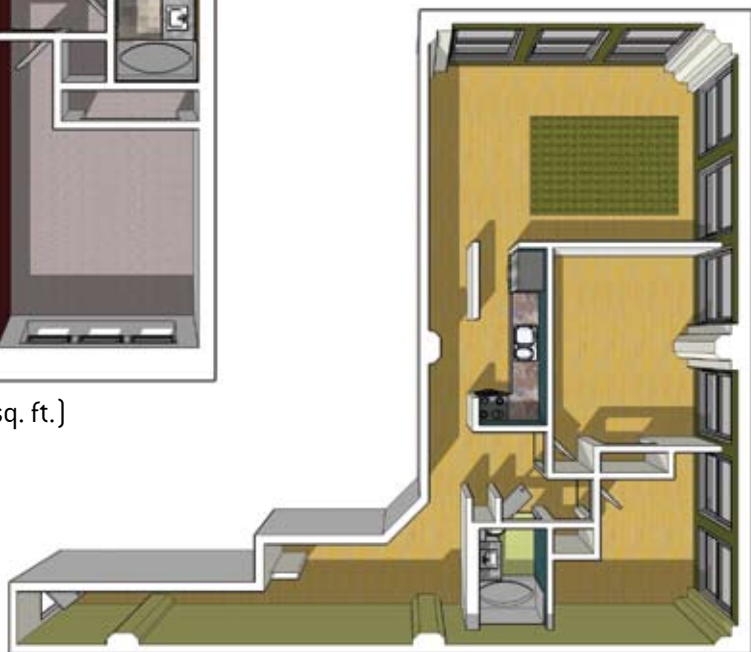
> Two-bedro



room duplex (960 sq. ft.)



>Two-level studio (550 sq. ft.)



>One-bedroom with study (1080 sq. ft.)



Features:

- > Mid-rise buildings on historic registry
- > Distinctive, individualized floor plans
- > Newly-renovated, contemporary kitchens and baths with premium finishes
- > Individual climate control systems
- > Controlled access indoor garage parking
- > Individually-monitored remote guest entry
- > State-of-the-art fitness center
- > Heated rooftop pool with grill and picnic area
- > Business center and community room
- > Clothes care center
- > Valet dry cleaning
- > Parcel delivery
- > Digital satellite TV (available)
- > Professional on-site management
- > 24-hour emergency maintenance
- > Short-term furnished corporate suites available



> *In the heart of the central business district,* Fourth & Plum Lofts puts residents within walking distance of a myriad of downtown attractions. A short stroll lets you shop at Tower Place Mall, take in a ball game, and enjoy a concert or the theater.

> *The three buildings of Fourth & Plum Lofts* were originally the Cincinnati Gas-Light & Coke Buildings, built in 1879 and 1902, and the Gibson Art Building, built in 1923. The property's unique architectural features have qualified it for inclusion on the National Register of Historic Places.

> *At Fourth & Plum Lofts,* each apartment is individually designed with a unique style not found anywhere else in the Cincinnati area. The variety of distinctive floor plans includes studios, lofts, platform bedrooms, and two-bedroom rooftop townhouses.





FOURTH & PLUM LOFTS
231 West 4th Street
Cincinnati, OH 45202
Phone: [513] 241-7272
FAX: [513] 241-6098
www.FourthPlum.com

Fees:

Application Fee: _____
(non-refundable)

Holding Fee: _____

Security Deposit: _____

Monthly Pet Fee: _____
(conditional; contact leasing office)

Lease Term: _____

Included in rent:

Free membership to complete amenity package and water, sewer, and trash removal charges.

Directions from I-71:

Take the 3rd Street exit, stay straight onto East 3rd Street, turn right onto Elm Street, turn left onto West 4th Street.

Directions from I-75:

Take the 5th Street exit, turn right onto Race Street, proceed to West 4th Street and turn right.